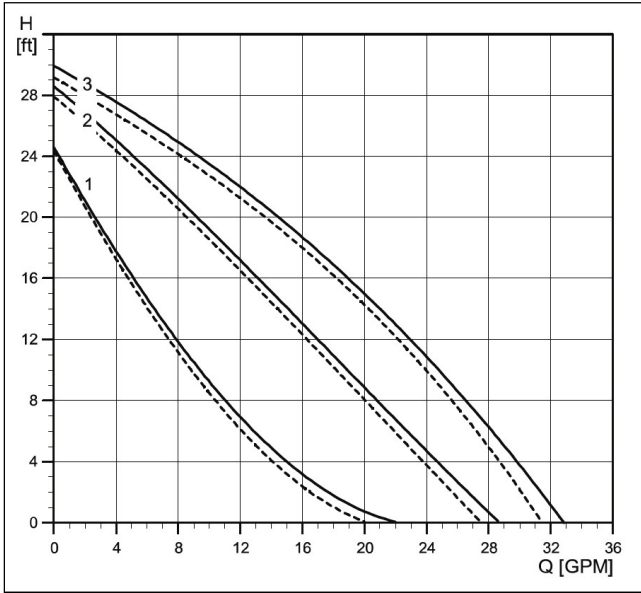


Technical Data

B&D PART# G3-2699/3

GRUNDFOS 2699 PUMP 3 SPEED (230V)

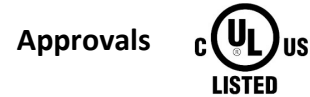


—— Without check valve - - - - With check valve

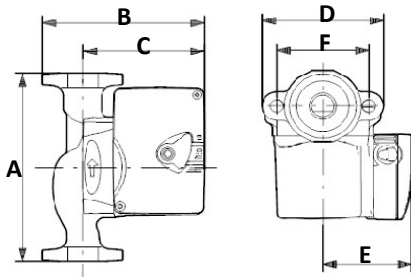
NOTE: Refer to the Without check valve on the pump curve chart above for your desired flow capabilities on this pump.

Flow Range: 0-33 gpm
Head Range: 0-29 feet
Motors: 2-pole, single-phase
Max. Liquid temperature 230 °F (110 °C)
Min. Liquid temperature 36 °F (2 °C)
Max. system pressure 145 psi (10 bar)

Speed	Volts	Amps	Watts	Hp	Capacitor
3	230	0.9	196	1/6	5uF/400V
2		0.8	179	1/6	5uF/400V
1		0.7	150	1/6	5uF/400V



Dimensions (inches)



A	B	C	D	E	F	Connection type and size	Shipping weight (lbs)
6-1/2	6	4-7/8	3-1/2	3-7/16	3-5/32	GF 15/26 flange (2) 1/2" dia. bolt holes	10.30

Warranty Information: This Grundfos product comes with a 2-year warranty sold as a stand alone pump. The warranty period may not, however, exceed 30 months from the date of production.

Other Warranty Information: If sold on any of the equipment pictured below, please refer to that product warranty as it may exceed a 2-year warranty.

This Pump is Available on the Non Pressurized & Pressurized Flow Centers Pictured Below

